

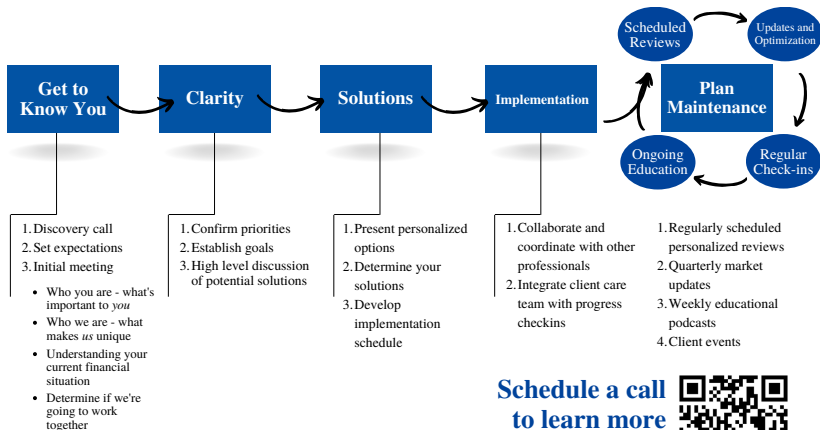


For more information on any of our services, visit www.SGAdvisor.net, call us at (262) 626-8892 or email us at Hello@SGAdvisor.net.

The Silbernagel Group, Inc. Real Wealth® Advisors | 114 Main St. PO Box 427 Kewaskum, WI 53040 | Tel: (262) 626-8892 | www.SGAdvisor.net | Hello@SGAdvisor.net
 Securities offered through Concede Investment Services, LLC (CIS), Member FINRA/SIPC. Advisory services offered through Concede Asset Management, LLC (CAM), an SEC Registered Investment Advisor. Insurance services offered through The Silbernagel Group Insurance Services LLC DBA Real Wealth Insurance (RWI). Tax and accounting services offered through Real Wealth Tax & Accounting, LLC. Legal services offered through AFBish Law Offices S.C. All listed entities are not affiliated with neither CIS nor CAM. We do not offer every plan available in your area. Any information we provide is limited to those plans we do offer in your area. Please contact Medicare.gov or 1-800-MEDICARE to get information on all of your options. 17553921 hd-cl-gp-a-1426-11-2023

The Silbernagel Group Way

We work together with legal, accounting and other professionals to design a plan to help you achieve your goals.



**Schedule a call
to learn more
about our
services!**



sgadvisor.net/contact-us

For more information on any of our services, visit www.SGAdvisor.net, call us at (262) 626-8892 or email us at Hello@SGAdvisor.net.

The Silbernagel Group, Inc. Real Wealth® Advisors | 114 Main St. PO Box 427 Kewauqua, WI 53040 | Tel: (262) 626-8892 | www.SGAdvisor.net | Hello@SGAdvisor.net

Securities offered through Concoide Investment Services, LLC (CIS), Member FINRA/SIPC. Advisory services offered through Concoide Asset Management, LLC (CAM), an SEC Registered Investment Advisor. Insurance Services offered through The Silbernagel Group Insurance Services LLC DBA Real Wealth Insurance (RWI). Tax and accounting services offered through Real Wealth Tax & Accounting, LLC. Legal services offered through Affield Law Offices S.C. All listed entities are not affiliated with neither CIS nor CAM. We do not offer every plan available in your area. Any information we provide is limited to those plans we do offer in your area. Please contact Medicare.gov or 1-800-MEDICARE to get information on all of your options. 17553921 b4-th-gp-a-1426-11-2023